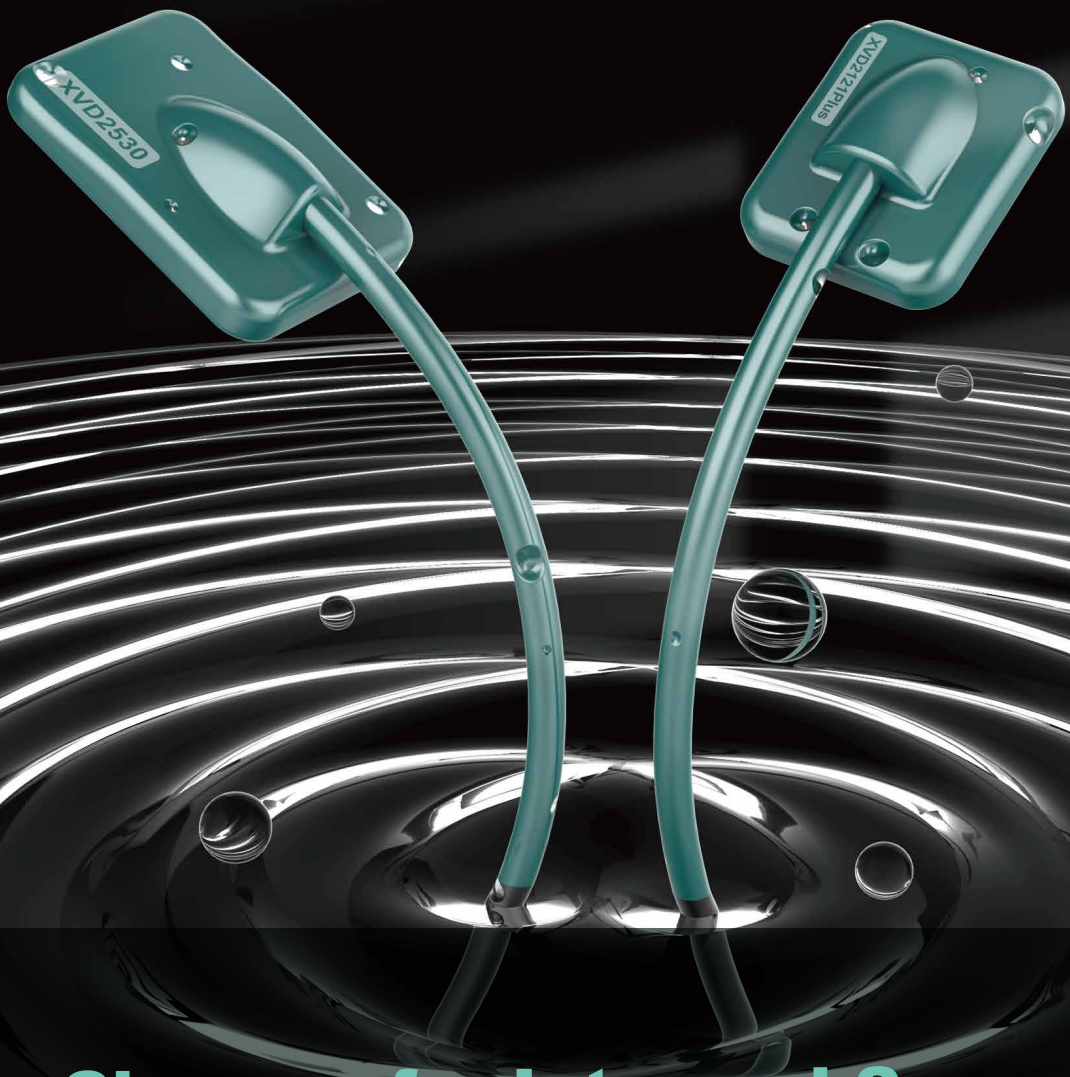


The world's first photon-counting x-ray intraoral sensor

- FDA Approved
- Patented high-definition direct imaging technology
- Stunning first-image resolution and contrast
- Proven durability through lab and field-testing
- Thin profile design for comfort and accuracy
- Quality backed by a 5-year replacement warranty

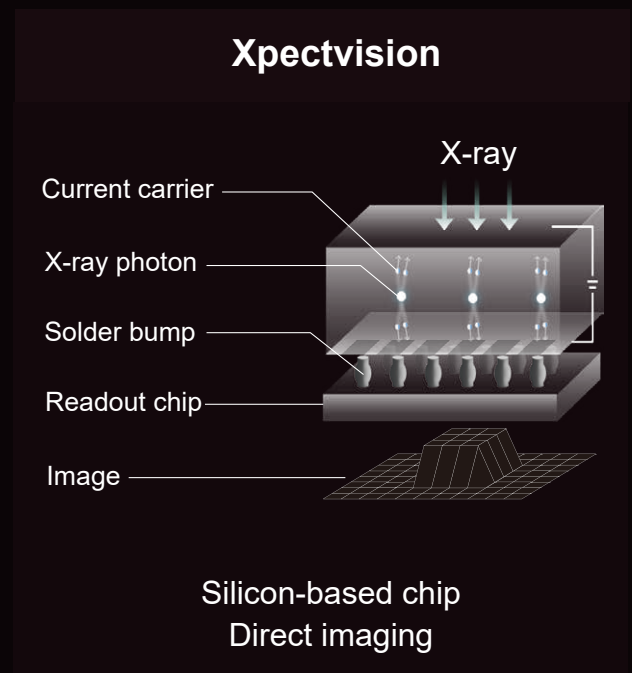
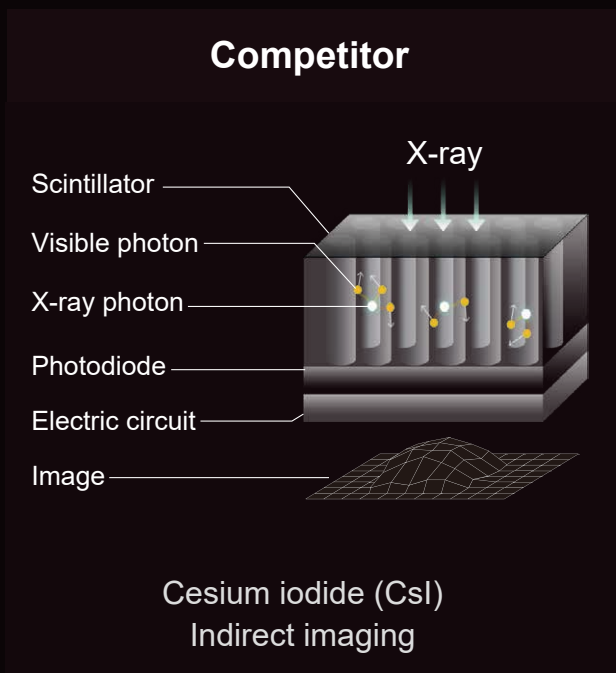


A Game Changer for Intraoral Sensor

Making dental X-ray more accessible to dentists worldwide

Cutting Edge Technology and Strict Tests Deliver Unrivaled Durability

The Xpectvision intraoral sensor uses silicon-based chips instead of the traditional material, cesium iodide (CsI), avoiding image blurring and performance deterioration.



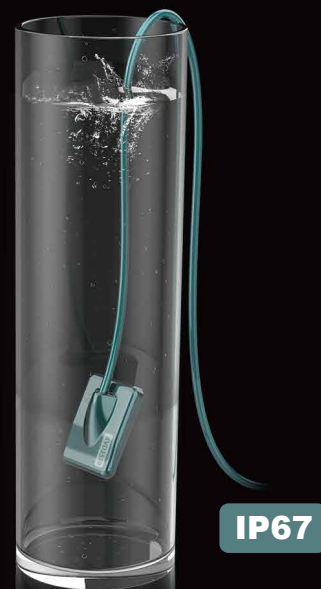
Sensor Tested to 500,000+ Exposures. High-Strength, Durable Cable.

100,000+ cable bending tests and pull strength to withstand forces of up to 22 lbs.



Water Resistance Tested to IEC IP67

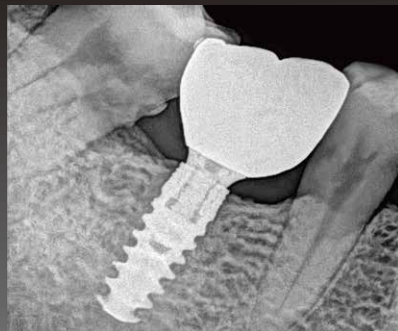
The impact-resistant sensor case is sealed to withstand submersion in 3ft of water for 30 minutes.



Xpectvision's Direct Imaging Innovation Provides Unparalleled Clinical Image Quality

Photon-counting is an emerging technology in clinical CT that meets today's demands for a cost-effective solution that meets stringent technical requirements. Xpectvision is the world's first to apply this new technology to intraoral dental sensors. The result is unrivaled quality and consistency of image quality.

Direct-imaging eliminates the need for time consuming exposure enhancements. Quick and easy adjustments to contrast and brightness can be made to meet a range of clinical requirements.

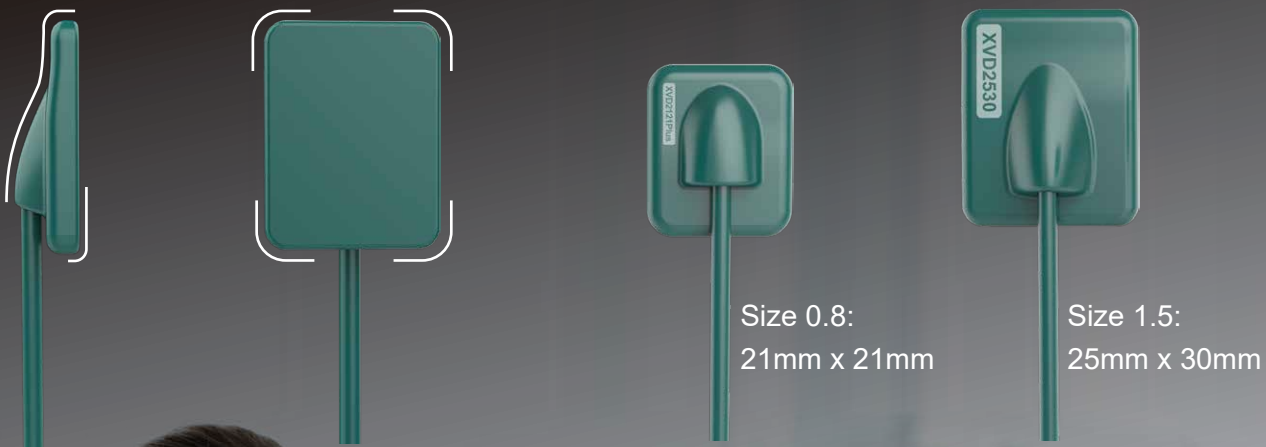


Ergonomic Design to Maximize Patient Comfort

One of the Thinnest X-Ray Sensors in the Market

Both adult and pediatric sensor sizes are available. The Xpectvision's thin profile sensors are designed with patient comfort in mind, while providing an optimized imaging surface area.

Sensor positioners help with quick positioning, significantly reducing patients' discomfort and improving diagnostic efficiency.



Five-Year Warranty

Xpectvision intraoral sensors are backed with a five-year replacement warranty.



Software upgrades and customer support is included with each intraoral sensor at no additional charge.

Xpectvision Intraoral Sensor Accessories

Yellow
For premolar/molar



Red
For bitewing



Blue
For anterior teeth



Disposable sleeves



Technical specification

Specifications	XVD2121 Plus	XVD2530
Grayscale	65,536 gray level(16 bit)	65,536 gray level(16 bit)
Imaging Area	21*21 mm ²	25*30 mm ²
Sensor Area	26.5*32 mm ²	30*37 mm ²
Thickness	5 mm	5 mm
Image Format	BMP/DIR/DCM/JPEG/PNG/TIFF	BMP/DIR/DCM/JPEG/PNG/TIFF

Discover more at xpectvision.net
or contact your local authorized dealer.